



PRESS PACK THE NEW TOUAREG



Note: This press release, image motif and films about the Touareg can be found online at www.volkswagen-newsroom.com
All equipment specifications apply to the German market. The following images of the vehicles show optional equipment.

Contents

IN BRIEF	4	THE RUNNING GEAR	18
Key facts at a glance	5	The enhanced running gear	19
THE DESIGN	12	THE HISTORY	20
The new exterior	13	The first 21 years	21
The new IQ.Light HD matrix headlights	14	The Technical data	22
THE INTERIOR	15	THE MEDIA LIBRARY	24
The interior update	16		

Media Contact



Volkswagen Communications
Product Communications
Martin Hube
Spokesperson Passat / Arteon /
Touareg / PHEV
Tel: +49 5361 9 49874
martin.hube@volkswagen.de

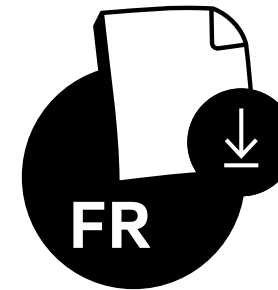
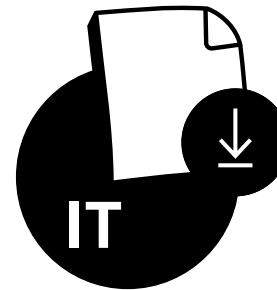
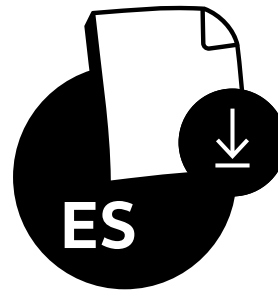
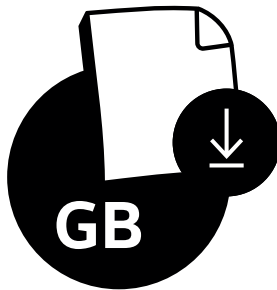
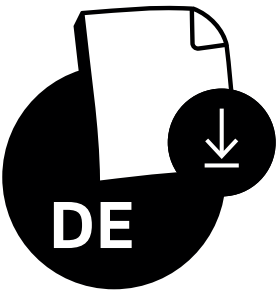


Volkswagen Communications
Product Communications
Benedikt Griffig
Head of Products and Technology
Tel: +49 5361 9 977164
benedikt.griffig@volkswagen.de



Plain text versions

Download all unformatted plain text versions
of the press pack here:



THE TOUAREG LAUNCHES
WITH NEW TECHNOLOGIES
AND NEW DESIGN



IN BRIEF



- » **Touareg 2023:** premium SUV shines with new high-tech features
- » **Premium style:** major design update for the front and rear
- » **Newly configured running gear:** large spread between agility and comfort
- » **Optimised interior:** made for long distances
- » **Configurator open:** presales of the new Touareg start on 24 May
- » **Interactive light:** first Volkswagen with IQ.Light HD matrix headlights





»» The new Touareg impresses with top quality and outstanding comfort. We have again systematically implemented the wishes of our customers in this model. ««

Imelda Labbé

Member of the Board of Management of the Volkswagen brand, responsible for "Sales, Marketing and After Sales"

The Touareg is the all-rounder in the large SUV category – the perfect combination of comfortable touring car, superior towing vehicle and authentic off-roader. Volkswagen is now launching the next Touareg generation. The flagship model is the first Volkswagen to make its debut with newly developed IQ.Light HD matrix headlights. The interactive lighting system makes driving at night even more comfortable. Volkswagen has also upgraded

the high-end interior, and the Innovision Cockpit features the latest hardware and software. A new roof load sensor and enhanced running gear systems increase the bandwidth between optimum comfort and maximum performance. With its new technologies, the Touareg is more versatile and multi-faceted than ever before. The newly designed front and rear ends mean the update is instantly recognisable. Particularly distinctive features include the LED tail light

Touareg R eHybrid with 340 kW (462 PS), fuel consumption in l/100 km combined: 2.4; power consumption in kWh/100 km combined: 24.2; CO₂-emissions in g/km combined: 54; only consumption and emission values according to WLTP and not according to NEDC are available for the vehicle.



The Touareg R-Line with IQ.Light HD matrix headlights.

clusters – these are now designed as a light strip and feature a red illuminated Volkswagen logo. Presales of the new Touareg start in Europe on 25 May 2023 (Touareg R eHybrid³: 22 June 2023).

Popular premium SUV. More than 1.13 million Touareg have been sold so far. Imelda Labbé, Member of the Brand Board of Management for Sales, Marketing and Aftersales: "The new Touareg impresses

with top quality and outstanding comfort. We have again systematically implemented the wishes of our customers in this model – sharpening the design, making operation even more intuitive, and enhancing the excellent driving characteristics. The result is a true all-rounder that will excite on-road, off-road and naturally also as a first-class towing vehicle."

³ Where ranges are stated, the values for consumption and CO₂ emissions depend on the selected vehicle equipment.



» The Touareg has always been a technology pioneer for us, allowing us to transfer new developments into other brand vehicles as part of a top-down strategy. And we are following the same approach with the new Touareg. «



Kai Grünitz

Member of the Board of Management of the Volkswagen brand, responsible for "Technical Development"

Innovation pioneer. Innovative technologies have always made their debut in the Touareg. This know-how often benefits the smaller vehicle classes, and this is also the case here. Kai Grünitz, Member of the Brand Board of Management responsible for Development: "The Touareg has always been a technology pioneer for us, allowing us to transfer new developments into other brand vehicles as part of a top-down strategy. And we are following the same approach with the new Touareg. As the first Volkswagen model, it is being launched with the newly developed HD matrix headlights – one of the best lighting systems in the world. More than 38,000 interactive LEDs project a light carpet exactly onto the

driving lane and illuminate the road more precisely than ever before. We will soon transfer the HD matrix lighting system to other SUV-class models."

Fusion of technological systems. The Touareg is equipped with a new roof load sensor that is closely integrated with the running gear electronics. This offers the benefit of increased agility. If a roof box is fitted, the sensor detects this and passes on the information to assist systems such as Electronic Stability Control. This system then in turn intervenes earlier to increase driving stability. In contrast, the systems allow sportier performance than before if there is no roof load. For Jochen Reichel,



The new Touareg with active Travel Assist.

Head of Driving Dynamics, Steering and Control Systems, it is this interaction of all technologies that is a standout feature of the new Touareg: "Thanks to the roof load sensor, we have been able to further increase the spread between maximum comfort and optimum performance. As part of this, the enhanced coordination of the running gear and control systems ensures greater stability and precision in both dynamic and comfort-oriented driving

situations. Particularly in combination with the running gear systems such as active roll compensation and all-wheel steering, the Touareg now offers even greater driving dynamics." The Touareg's innovative assist systems include technologies such as Travel Assist¹ (assisted driving up to maximum speed), Area View (360-degree bird's eye view shown on the infotainment system display to facilitate manoeuvring), Park Assist Plus with remote parking capability¹ via app for automatically driving into and out of parking spaces (the driver can control the parking procedure from outside the vehicle), Trailer Assist¹ (assisted manoeuvring with trailer) and Night Vision (night vision assistance).

» Thanks to the roof load sensor, we have been able to further increase the spread between maximum comfort and optimum performance. «



Jochen Reichel

Head of Driving Dynamics, Steering and Control Systems

¹ Within the system limits: the driver must always be ready to override the assist system and is not released from the responsibility of driving the vehicle with due care and attention.





Left: The new Touareg with Elegance equipment.
Bottom: The red-illuminated Volkswagen logo of the Touareg R-Line.

Striking design update. The new Touareg can be recognised immediately by the new front and rear design. At the front, the complete unit with radiator grille and headlights and the front apron have been given a new look. Particularly striking are the IQ.Light HD matrix headlights, which come as standard except on the basic model. With three light modules and thus three light points on each side, they create an unmistakable day and night light design. The centre horizontal strip in the radiator grille is also illuminated for the first time on the Touareg. Another unique Touareg feature is the newly designed rear, which now has a continuous horizontal LED strip for the tail light clusters and incorporates a red-illuminated Volkswagen logo for the first time (standard except for basic model).





Der neue Touareg Elegance mit den 21-Zoll-Felgen des Typs „Napoli“.

Petrol, diesel and plug-in hybrid power-trains.

The new Touareg will be launched in five powertrain versions. These all come with 3.0-litre V6 engines: one turbocharged petrol engine (250 kW³/340 PS), two turbo-diesel engines (170 kW³/231 PS and 210 kW³/286 PS) and two plug-in hybrid

drives (V6 petrol engine plus electric drive motor). The plug-in hybrid drive of the Touareg eHybrid develops a system power of 280 kW³ (381 PS); on board the Touareg R eHybrid, the system delivers an output of 340 kW³ (462 PS). All engines are paired as standard with an eight-speed automatic gearbox and the 4MOTION permanent all-wheel drive system.

Basic², Elegance², R-Line² and R model^{2/3}.

In terms of equipment, the new Touareg will be launched in a basic version with the current front design (from €69,200²) and in the two exclusive lines Elegance (from €75,070²) and R-Line (from €79,660²). The flagship model is positioned above these: the distinctive and sporty Touareg R eHybrid developed by Volkswagen R (from €93,870^{2/3}).

Basic version. The general standard equipment includes the following features (excerpt):

- | | | |
|--|--------------------------------------|---|
| » Air Care Climatronic (two-zone automatic air conditioner) | » Electric luggage compartment cover | » Multifunction steering wheel in leather |
| » Touareg background lighting with white-illuminated trims in new design | » Electrically operated tailgate | » Discover Pro Max navigation system |
| » Digital Innovision Cockpit | » LED tail light clusters | » Keyless Go keyless starting system |
| » Heated front seats | » LED headlights | » Multifunction camera |

Various assist systems are also on board as standard (excerpt):

- | | | |
|--|---|--|
| » Adaptive Cruise Control (ACC) ¹ | » Park Assist ¹ | » Lane Assist lane keeping system ¹ |
| » Autonomous Emergency Braking (Front Assist) ¹ | » Rear View reversing camera ¹ | » Dynamic Road Sign Display ¹ |

¹ Within the system limits: the driver must always be ready to override the assist system and is not released from the responsibility of driving the vehicle with due care and attention.

² All equipment details, prices (incl. 19% VAT) and power specifications apply to the model range offered in Germany. Please contact the press spokesperson in your country for the specific equipment, prices and drive systems in your market.

³ Where ranges are stated, the values for consumption and CO₂ emissions depend on the selected vehicle equipment.

Touareg V6 TSI 4MOTION with 250 kW (340 PS), petrol 95 RON: WLTP combined fuel consumption 10.7 l/100 km; combined CO₂ emissions 243 g/km.

Touareg V6 TDI 4MOTION with 170 kW (231 PS), diesel: WLTP combined fuel consumption 8.0 l/100 km; combined CO₂ emissions 209 g/km.

Touareg V6 TDI 4MOTION with 210 kW (286 PS), diesel: WLTP combined fuel consumption 8.0 l/100 km; combined CO₂ emissions 209 g/km.

Touareg eHybrid 4MOTION with 280 kW (381 PS), petrol 95 RON: WLTP combined fuel consumption 2.2–2.1 l/100 km; combined power consumption 23.5–23.2 kWh/100 km; combined CO₂ emissions 50–48 g/km.

Touareg R eHybrid with 340 kW (462 PS), fuel consumption in l/100 km combined: 2.4; power consumption in kWh/100 km combined: 24.2; CO₂-emissions in g/km combined: 54; only consumption and emission values according to WLTP and not according to NEDC are available for the vehicle.





Elegance and R-Line. The following details supplement the equipment here (excerpt):

- » 30-colour background lighting, colour settings possible in three zones (new: including footwell and drink holder lighting)
- » Radiator grille in specific design (new)
- » Alloy wheels in specific design (updated)
- » Leather seats, electrically adjustable
- » Bumpers in specific design (new)
- » Interior trims in specific design (updated)
- » IQ.Light LED tail light clusters with dynamic brake and turn signal function and illuminated Volkswagen logo (new)
- » Volkswagen logo projection via exterior mirror housings as surround lighting (new)
- » IQ.Light HD matrix headlights (new)



A horizontal white LED strip in the radiator grille is part of the daytime running lights of the IQ.Light HD matrix headlights.



The continuous LED tail light cluster strip is a distinguishing feature of the new Touareg.

The Touareg R-Line in the new Chilli Red metallic colour with activated IQ.Light.



THE TOUAREG R eHYBRID FLAGSHIP MODEL IN SILICON GRAY MATT



The Touareg R eHybrid with new Silicon Gray Matt paintwork by Volkswagen R¹. Easily recognisable at left: the 22-inch Estoril alloy wheels.

Designed by Volkswagen R. The Touareg R eHybrid^{2/3} is the independent flagship model in the product line with the most powerful powertrain. The latest generation continues

a long tradition of Touareg R models with high-tech features and customised equipment. They have all been developed by Volkswagen R.

Touareg R eHybrid. In addition to numerous features from the Elegance and R-Line specifications, the flagship model also offers the following details (excerpt):

- » Brake calipers in painted blue finish, with silver R logo (new)
- » R logo projection via exterior mirror housings as surround lighting (new)
- » Blue contrasting stitching in the interior
- » Leather seats in Vienna design (Puglia optional)
- » 20-inch Braga alloy wheels (new)
- » Sill panel mouldings with illuminated R logo
- » Vehicle key with leather-covered cap and R logo
- » Start screen of the navigation system with R logo
- » Tilting and sliding panoramic sunroof (also for Touareg eHybrid)
- » Four-zone automatic air conditioner (also for Touareg eHybrid)

¹ Within the system limits: the driver must always be ready to override the assist system and is not released from the responsibility of driving the vehicle with due care and attention.

² All equipment details, prices (incl. 19% VAT) and power specifications apply to the model range offered in Germany. Please contact the press spokesperson in your country for the specific equipment, prices and drive systems in your market.

³ Where ranges are stated, the values for consumption and CO₂ emissions depend on the selected vehicle equipment.

Touareg R eHybrid with 340 kW (462 PS), fuel consumption in l/100 km combined: 2.4; power consumption in kWh/100 km combined: 24.2; CO₂-emissions in g/km combined: 54; only consumption and emission values according to WLTP and not according to NEDC are available for the vehicle.





The Touareg R eHybrid with Lapiz Blue metallic paintwork.



Above: The Touareg R eHybrid with 22-inch Estoril wheels and black exhaust tailpipes. Left: The key of the Touareg R eHybrid in R design.

THE TOUAREG R eHYBRID FLAGSHIP MODEL IN LAPIZ BLUE

New colour, 22-inch wheel rims. As a paint finish 'by Volkswagen R', the new colour Silicon Gray Matt is available exclusively for the Touareg R eHybrid and Touareg R-Line. Lapiz Blue metallic is also a traditional R colour. The Touareg R can be optionally equipped with 22-inch alloy wheels in Estoril design. The personalisation options are extended for all Touareg versions by four new alloy wheels in 19-, 20- and 21-inch sizes as well as the new paint finish Chilli Red metallic.





THE DESIGN »

- › The front end has been redesigned. The new HD matrix headlights with three LED modules each are particularly striking. A total of 38,432 LEDs turn night into day
- › The new alloy wheels in 19-, 20- and 21-inch sizes catch the eye in the side view
- › At the rear, the new Touareg differs from its predecessor by having a continuous LED tail light cluster strip. The rear Volkswagen logo is illuminated in red in the top-of-the-range versions

THE NEW EXTERIOR

The front end. Volkswagen Design has revamped the front end of the Touareg. The whole upper radiator grille now emphasises the vehicle width even more. Particularly striking are the new IQ.Light HD matrix headlights with three LED modules and three L-shaped LEDs for the daytime running lights, as well as the new illuminated centre horizontal strip that extends from both sides of the Volkswagen logo. The horizontal strips feature chrome applications on the Touareg Elegance² and Touareg R-Line² and have a stylish high-gloss black finish on the Touareg R-Line with Black Style Package² and the Touareg R eHybrid^{2/3}. The lower air intakes are significantly larger than those on the previous Touareg and have individual designs depending on the equipment specification. This area is also finished in high-gloss black; the Elegance and R-Line specifications have additional chrome elements here.

The silhouette. Depending on equipment, the new wheel rims in the designs Coventry (19-inch, standard for R-Line²), Braga (20-inch, standard for R^{2/3}), Napoli (21-inch)



The Elegance-equipped front end, enhanced with chrome elements.

and Leeds (21-inch) immediately catch the eye in the side view. As part of the surround lighting function, the Volkswagen logo or the R symbol (Touareg R eHybrid^{2/3}) are now projected on to the road from the exterior mirror housings when the Touareg is opened and parked in darkness.

The rear end. A light bar now extends across the tailgate of the Touareg. A thin horizontal LED line is illuminated in the upper area of the light strip when the lighting is active; this line has a contrasting light colour in daytime driving mode without the headlights switched on. The same applies to the total of six L-shaped LEDs in the new tail light clusters. As the first Volkswagen produced in Europe, the new Touareg has a red-illuminated Volkswagen logo in combination with the IQ.Light HD matrix headlights. This is integrated in the new horizontal LED strip of the tail light clusters. This produces a unique graphic both during the day and at night.



The night light design of the Touareg R eHybrid with IQ.Light.



The Touareg Elegance with chrome-plated exhaust tailpipes.

¹ Within the system limits: the driver must always be ready to override the assist system and is not released from the responsibility of driving the vehicle with due care and attention.

² All equipment details, prices (incl. 19% VAT) and power specifications apply to the model range offered in Germany. Please contact the press spokesperson in your country for the specific equipment, prices and drive systems in your market.

Touareg R eHybrid with 340 kW (462 PS), fuel consumption in l/100 km combined: 2.4; power consumption in kWh/100 km combined: 24.2; CO₂-emissions in g/km combined: 54; only consumption and emission values according to WLTP and not according to NEDC are available for the vehicle.



THE NEW IQ.LIGHT HD MATRIX HEADLIGHTS

Intelligent light. The IQ.Light HD matrix headlights are a technical highlight in the new Touareg and are used in a Volkswagen for the first time in the world. HD stands for high definition and refers here to a sea of extremely bright pixels generated by 38,432 micro LEDs. They illuminate the road better than ever before and thus optimise comfort and safety for the driver and passengers. There are 19,216 micro LEDs distributed on each side of the

vehicle to the new triple headlights. Among other things, the matrix system optionally projects an interactive light carpet onto the lane of the premium SUV – the Lane Light. This makes driving at night even more comfortable and makes it easy to drive through narrow motorway road works in the dark because the bright light carpet follows the lane with magnet-like precision. The glare-free main beam is a further benefit of the new headlights; this continuous main beam can be left switched on outside built-up areas because the interactive LEDs make sure that the masking area for oncoming traffic and vehicles driving in front is more precise than ever before. Together



The Touareg R-Line with the new 21-inch Leeds rims.



The Touareg with active IQ.Light HD matrix headlights.

with the LED tail light clusters the driver can also configure three differently animated Coming and Leaving Home lighting effects.

High-tech details. The three modules in each headlight all perform their own tasks. A bi-matrix module is located on the outside with 16 LED pixels for the surround lighting and additional main beam. The actual HD matrix module is located in the middle with 19,200 individually controllable LEDs that permit various new light functions to be realised. Located on the inside is a reflector for the static and dynamic cornering light functions and the poor weather light. All three modules generate one light point each; together with the three L-shaped LED elements for the daytime running light and the horizontal LED strip in the radiator grille that extends to under the headlights, this results in a unique light design. Also, especially in combination with the Night Vision assist system – which detects people and animals by a thermal

imaging camera and shows them in the digital instruments (Digital Cockpit) and corresponding warning signals in the optional head-up display – the HD matrix lighting of the Touareg is one of the best lighting and night vision systems in the world. The Night Vision system also includes a marker light that briefly illuminates people in the potential danger area with a particularly bright light to make them even more visible to the driver. The combination of IQ.Light HD matrix headlights and Night Vision can help in earlier recognition and mitigation of dangerous situations.



The night vision system of the Touareg.





THE INTERIOR



- › The Touareg is equipped as standard with a digital display landscape, the Innovision Cockpit. Operation is intuitive. App integration by smartphone (App Connect) is now also possible wirelessly
- › Electronic devices such as tablets are now charged with 45 instead of 15 watts. A 730-watt sound system is optionally on board
- › New, soft materials in the door panels and centre console offer increased comfort

THE INTERIOR UPDATE

Enhanced vehicle interior. The Touareg² is equipped as standard with the Innovision Cockpit – an intuitive combination of digital instruments (Digital Cockpit, display diagonal 30.5 cm, 1,920 x 720 pixels) and the Discover Pro Max high-end infotainment system with a central touchscreen (display diagonal 38.1 cm, 1,920 x 1,020 pixels). As a 'one-screen design', the two displays form a continuous digital landscape on one viewing and operating axis. Among other things, the Innovision Cockpit now offers lane-level navigation and high-resolution HD map data. The voice control system of the Touareg is also based on a new development level. App integration via smartphone and App Connect (Apple CarPlay, Android Auto) can now also take place wirelessly. Volkswagen has upgraded the buttons and the thumb wheel for volume control in the centre console – they are now finished in high-gloss black. In addition, Volkswagen has redesigned the illuminated trims in the dash panel and added the Touareg logo as a finishing touch.

Higher charging capacity for laptops and other equipment. New USB-C connections



The interior of the new Touareg with 30-colour background lighting and different light zones.

with a charging capacity of 45 watts (previously 15 watts) permit fast charging of electronic devices such as smartphones, tablets or laptops. The optional cockpit

features include a powerful 730-watt Dynaudio sound system and a head-up display (virtual screen size: 217 x 88 mm).

² All equipment details, prices (incl. 19% VAT) and power specifications apply to the model range offered in Germany. Please contact the press spokesperson in your country for the specific equipment, prices and drive systems in your market.





Ideal for long distances. The Touareg is designed for high driving comfort. Its high quality standard has been enhanced on the basis of customer feedback and a number of details adapted. For example, the top sections of the interior door panels now have attractive double decorative seams. The side trims of the centre console are now made of a haptically enhanced foamed material and have double seams; the contact surfaces for the knees are therefore softer.

The interior of the Touareg R-Line with leather package. The hybrid models are also equipped as standard with a panoramic roof.



THE RUNNING GEAR



- › The set-up of the enhanced running gear has been revamped and now allows an even greater spread between performance and comfort
- › New, optional 21-inch performance tyres improve the handling and braking characteristics
- › Volkswagen offers the all-wheel-drive Touareg with high-tech options such as active roll compensation and all-wheel steering

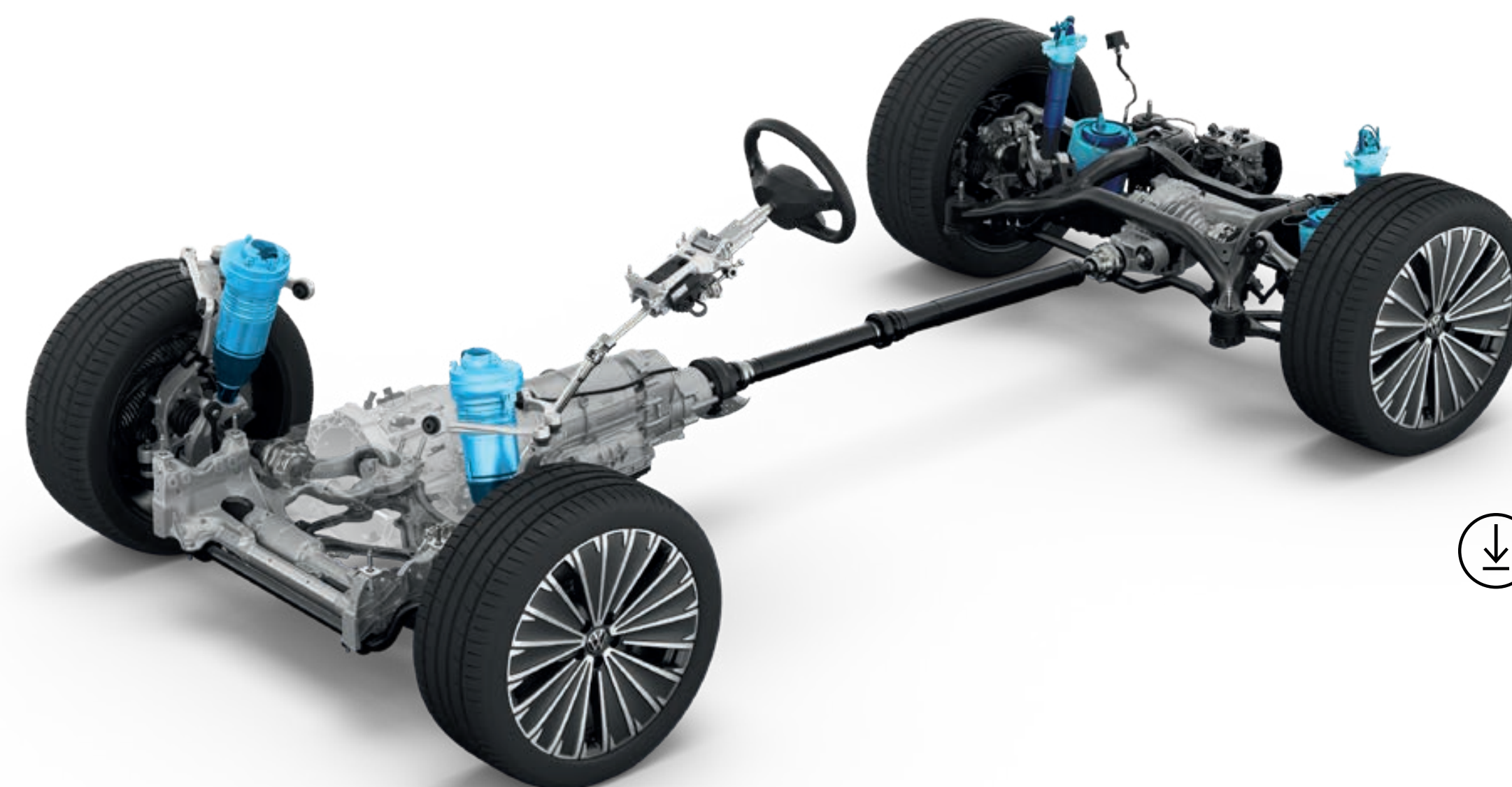


The Touareg is optionally available with air suspension. The air spring elements are shown in blue in the graphic below.

THE ENHANCED RUNNING GEAR

New running gear generation. The running gear of the Touareg is based on a new development level. Among other things, a roof load sensor is now used that is closely integrated with the vehicle electronics. This makes it possible to transfer higher transverse forces and thus increase road agility in interaction with the control systems and running gear hardware. The standard steel

spring running gear and the optional air suspension running gear have also been technically modified. Both comfort and agility have been raised to a new level thanks to the use of new running gear components and a revamped control system setup. New, optional 21-inch performance tyres further improve handling and braking characteristics.





THE HISTORY »

- › The first generation of the Touareg was launched in 2002; its design DNA still shapes the SUV product line up to the present day. Volkswagen sold 450,000 units in nine years
- › The Touareg was offered with hybrid drive for the first time when the second-generation model was launched in 2010. Approximately 479,000 customers opted for the second-generation vehicle in nine years
- › The third generation made its debut in 2018 with a new plug-in hybrid drive. More than 200,000 units of this Touareg generation were produced in just four years



The Touareg AAC concept vehicle from 2000.

THE FIRST 21 YEARS

2002 – the first Touareg. In 2002, the Touareg was the first SUV from Volkswagen. With the impetus of the new top model, the Volkswagen brand subsequently developed into one of the leading global full-range providers. The Touareg also became the pioneer of an extremely successful vehicle type that is today offered by Volkswagen in every segment. All Volkswagen SUVs carry traces of the Touareg's DNA in their design. Strictly speaking, however, the history of the Touareg started in January 2000 with the world premiere of the AAC pickup/SUV design study in Detroit. This design appetiser already had the distinctive new Volkswagen SUV front end, which

then went into series production in autumn 2002 with the first Touareg. Characteristic style features included the bonnet raised in a v-shape in the middle, large horizontal bars in the radiator grille, and multiple headlights, which always formed a visual unit with the lower outer surfaces of the bonnet – as described, this design DNA still makes every Touareg immediately recognisable.

A Boeing 747 on tow. Volkswagen made a big impression with the Touareg's engines right from the start. These included power plants such as the V10 TDI with 230 kW⁴ (313 PS) and a torque of 750 Nm. In 2006,

In 2006, the Touareg V10 TDI comfortably towed a Boeing 747 to its take-off position.



a Touareg V10 TDI comfortably towed a 155-tonne Boeing 747 to its takeoff position instead of the permitted 3.5-tonne maximum trailer weight as part of an experiment. In the first R model of the product line – the Touareg R50 – the output of the 10-cylinder engine increased to 268 kW⁴ (350 PS). There was even a 12-cylinder Touareg in a limited edition of 500 vehicles. The power rating of this W12 engine was 331 kW⁴ (450 PS). The most successful models in terms of sales volume were the Touareg versions with five-⁴, six-⁴ and eight-cylinder engines⁴. Alongside the torque, Volkswagen always attached great importance to high efficiency. Within nine years, a total of 450,000 customers chose the first-generation Touareg.

2010 – the second Touareg. With the debut of the second generation in 2010, the Touareg became even more comfortable, without neglecting the authentic SUV characteristics. Parallel to this, Volkswagen placed an even greater focus on efficiency: the first Volkswagen SUV with additional electric drive system was launched with the Touareg Hybrid⁴. The 4MOTION permanent all-wheel drive system was again naturally on board as standard. This drive system ensured added safety, high-class off-road performance and optimum suitability as

a towing vehicle. This Touareg also felt at home pulling trailers laden with boots, bikes, classic cars or horses – no matter what the terrain, and again up to a maximum weight of 3.5 tonnes. Approximately 479,000 units of the second generation were sold over a period of nine years.

2018 – the third Touareg. With the third Touareg generation, the first plug-in hybrid⁴ of this product line made its debut. The function as a technology pioneer was reflected once more in these hybrid drives and the completely newly developed Innovision Cockpit. The same was true for the wide range of new assist and running gear systems, such as remote parking by smartphone, all-wheel steering or active roll compensation with electromechanical anti-roll bars. As a high-quality blend of long-distance, towing and off-road vehicle, the third Touareg also served its very own, practically-minded clientele. In 2022, Volkswagen celebrated the 20th anniversary of the premium SUV – with the exclusive special-edition model Touareg EDITION 20⁴. By the end of 2022 – in just four years, more than 200,000 customers had opted for this Touareg generation.

⁴ This model is no longer available.



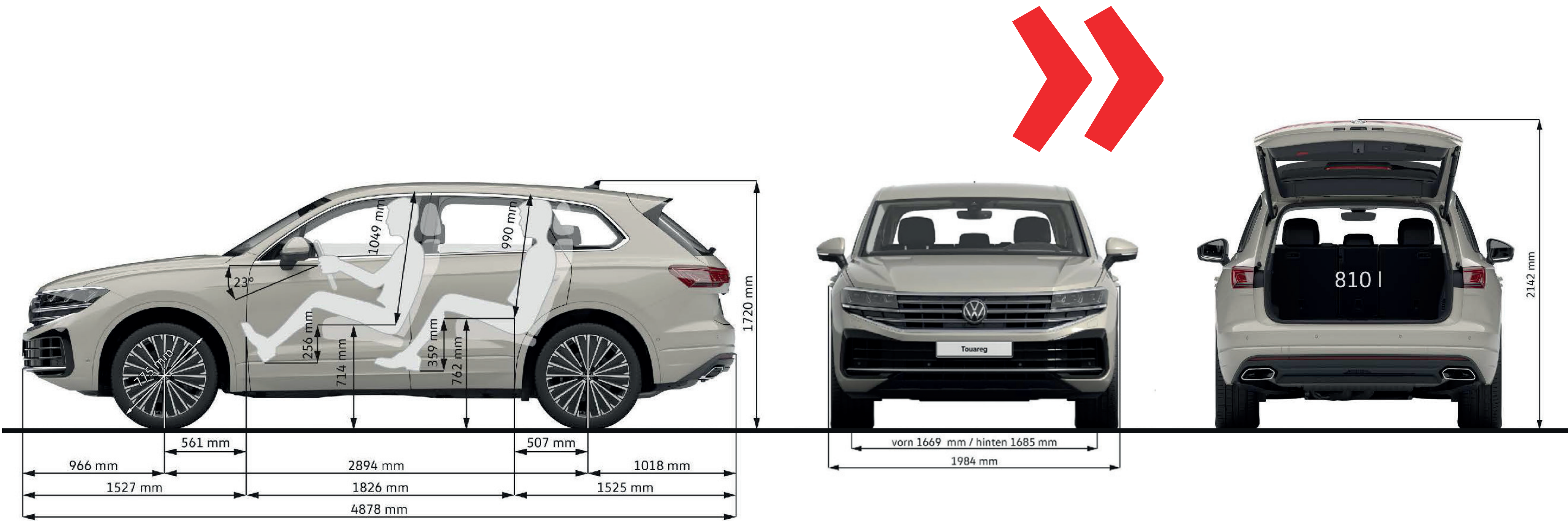
THE TECHNICAL DATA – THE NEW TOUAREG

		Touareg V6 TSI 4MOTION	Touareg V6 TDI 4MOTION	Touareg V6 TDI 4MOTION	Touareg eHybrid 4MOTION	Touareg R eHybrid 4MOTION
Maximum power	kW (PS)	250/340	170/231	210/286	280 ⁵ /381 ⁵	340 ⁵ /462 ⁵
Maximum torque	Nm	450	500	600	600 ⁶	700 ⁶
Engine type	cm ³	Turbocharged petrol / V6 / 2,995	Turbo diesel / V6 / 2,967	Turbo diesel / V6 / 2,967	Electric drive motor plus turbo- charged petrol / V6 / 2,995	Electric drive motor plus turbo- charged petrol / V6 / 2,995
Gearbox (Tiptronic)		8-speed automatic	8-speed automatic	8-speed automatic	8-speed automatic	8-speed automatic
Drive type		4MOTION (permanent all-wheel drive)	4MOTION (permanent all-wheel drive)	4MOTION (permanent all-wheel drive)	4MOTION (permanent all-wheel drive)	4MOTION (permanent all-wheel drive)
Top speed	km/h	250	222	236	250	250
0–100 km/h	seconds	5.9	7.6	6.3	6.3	5.1
Battery capacity (net/gross)	kWh	–	–	–	14.3 / 17.9	14.3 / 17.9
Consumption (WLTP), combined	litres/100 km	10.7	8.0	8.0	2.2–2.1	2.4
Power consumption (WLTP), combined	kWh/100 km	–	–	–	23.5–23.2	24.2
CO ₂ emissions (WLTP), combined	g/km	243	209	209	50–48	54
Length	mm	4,878	4,878	4,878	4,878	4,878
Width (excluding exterior mirrors)	mm	1,984	1,984	1,984	1,984	1,984
Height	mm	1,720	1,720	1,720	1,720	1,720
Wheelbase	mm	2,894	2,894	2,894	2,894	2,894
Luggage compartment capacity up to height of rear bench seat backrest	litres	810	810	810	655	655
Luggage compartment capacity up to behind the first seat row	litres	1,800	1,800	1,800	1,675	1,675
Maximum trailer weight (braked with 12% gradient)	kg	3,500	3,500	3,500	3,500	3,500
Ramp angle front/rear	°	23.3 / 17.2	23.3 / 17.2	23.3 / 17.2	23.3 / 17.2	23.3 / 17.2
Breakover angle	°	13.5	13.5	13.5	13.5	13.5

⁵ System power. ⁶ System torque.

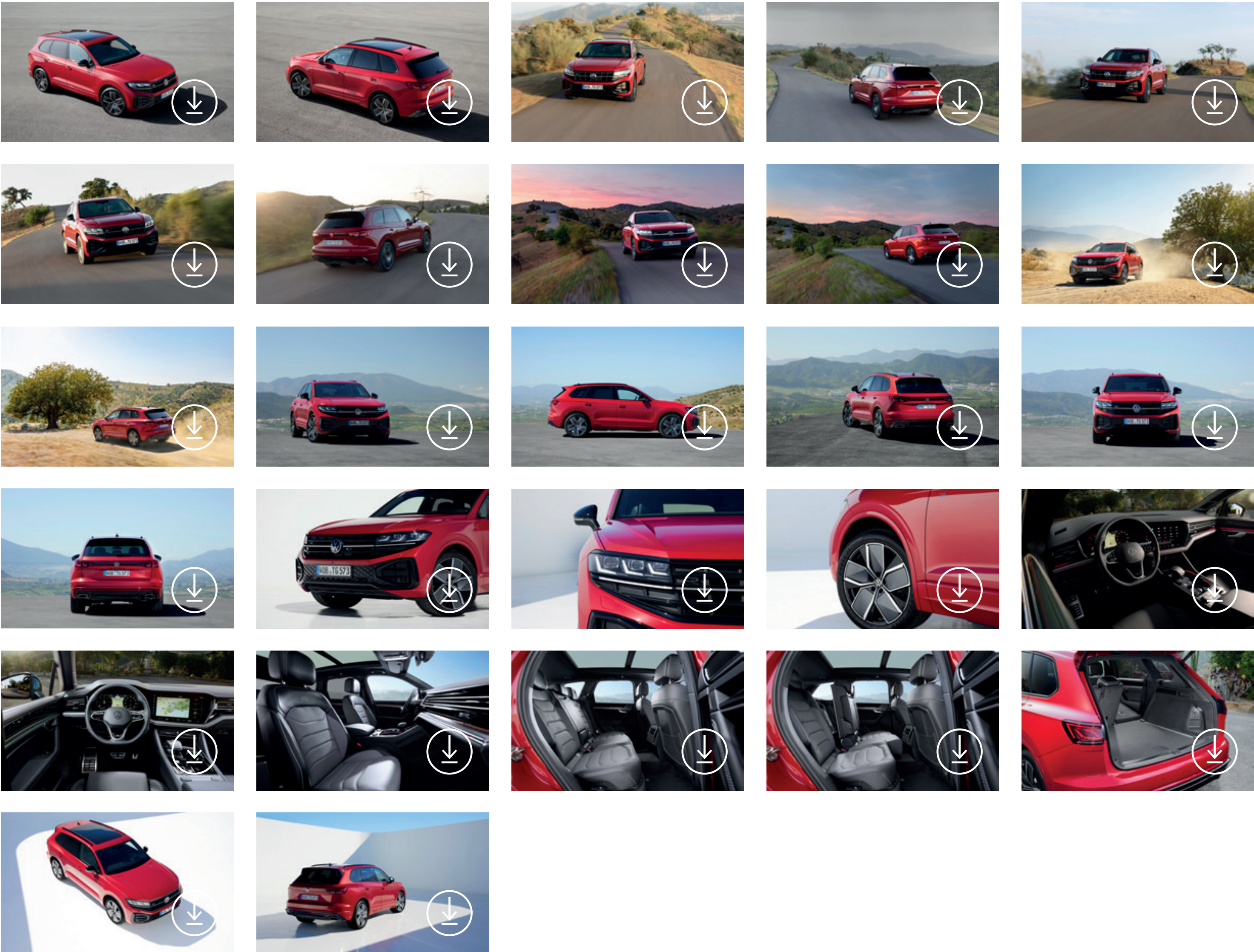


THE TECHNICAL DATA – THE NEW TOUAREG





The Touareg R-Line

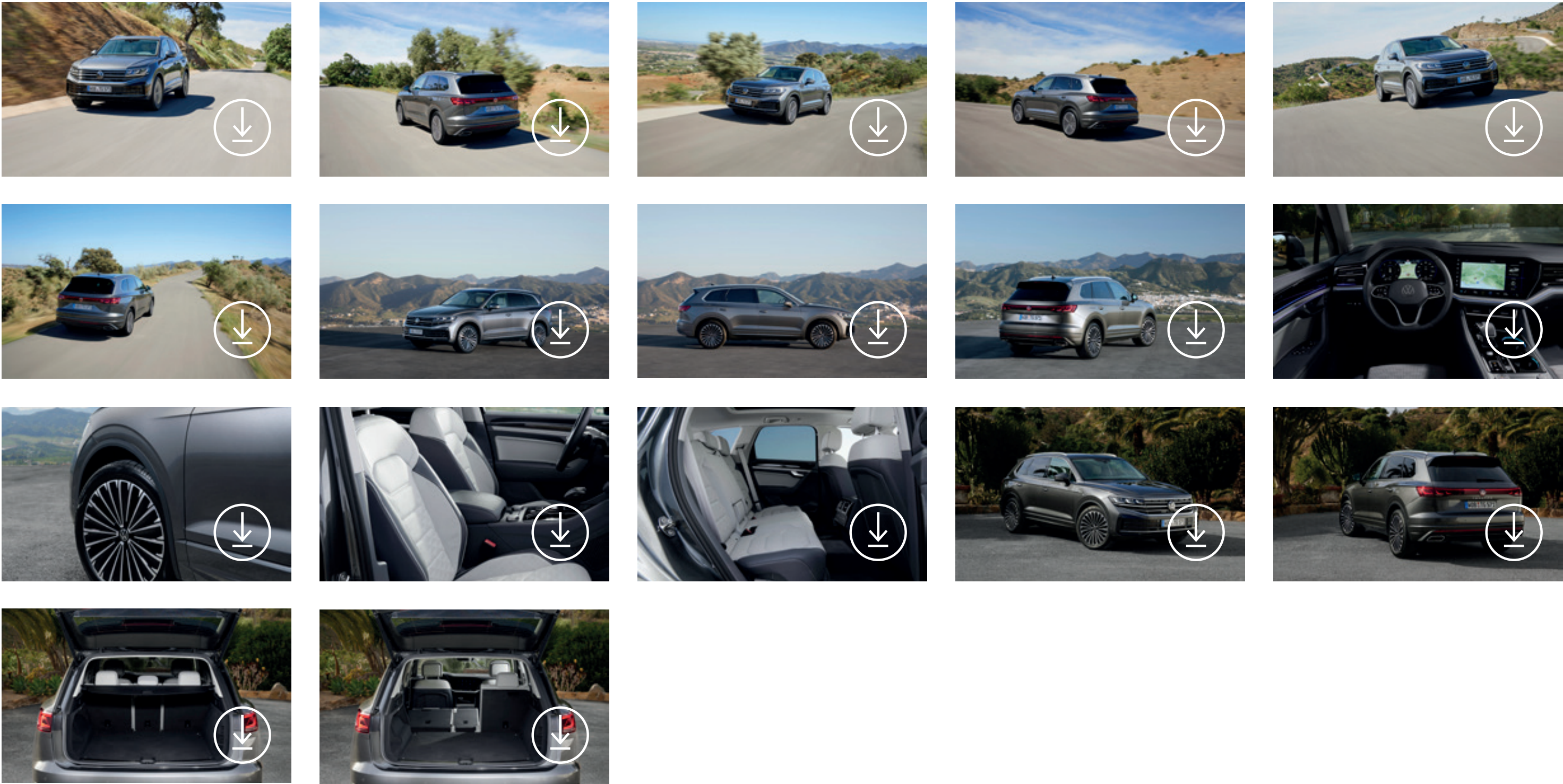


Rights of use
The text, image, audio and video documents provided on **www.volkswagen-newsroom.com** are for information purposes only and may be used for editorial presentations on the social web – or in the case of journalists, influencers and employees of media companies, as a source for their own editorial reporting.
Text, image, audio and video documents may not be used for commercial purposes or passed on to third parties. For all other content, the relevant terms of use apply to the use of **www.volkswagen-newsroom.com**.



Rights of use
The text, image, audio and video documents provided on **www.volkswagen-newsroom.com** are for information purposes only and may be used for editorial presentations on the social web – or in the case of journalists, influencers and employees of media companies, as a source for their own editorial reporting.
Text, image, audio and video documents may not be used for commercial purposes or passed on to third parties. For all other content, the relevant terms of use apply to the use of **www.volkswagen-newsroom.com**.

The Touareg Elegance



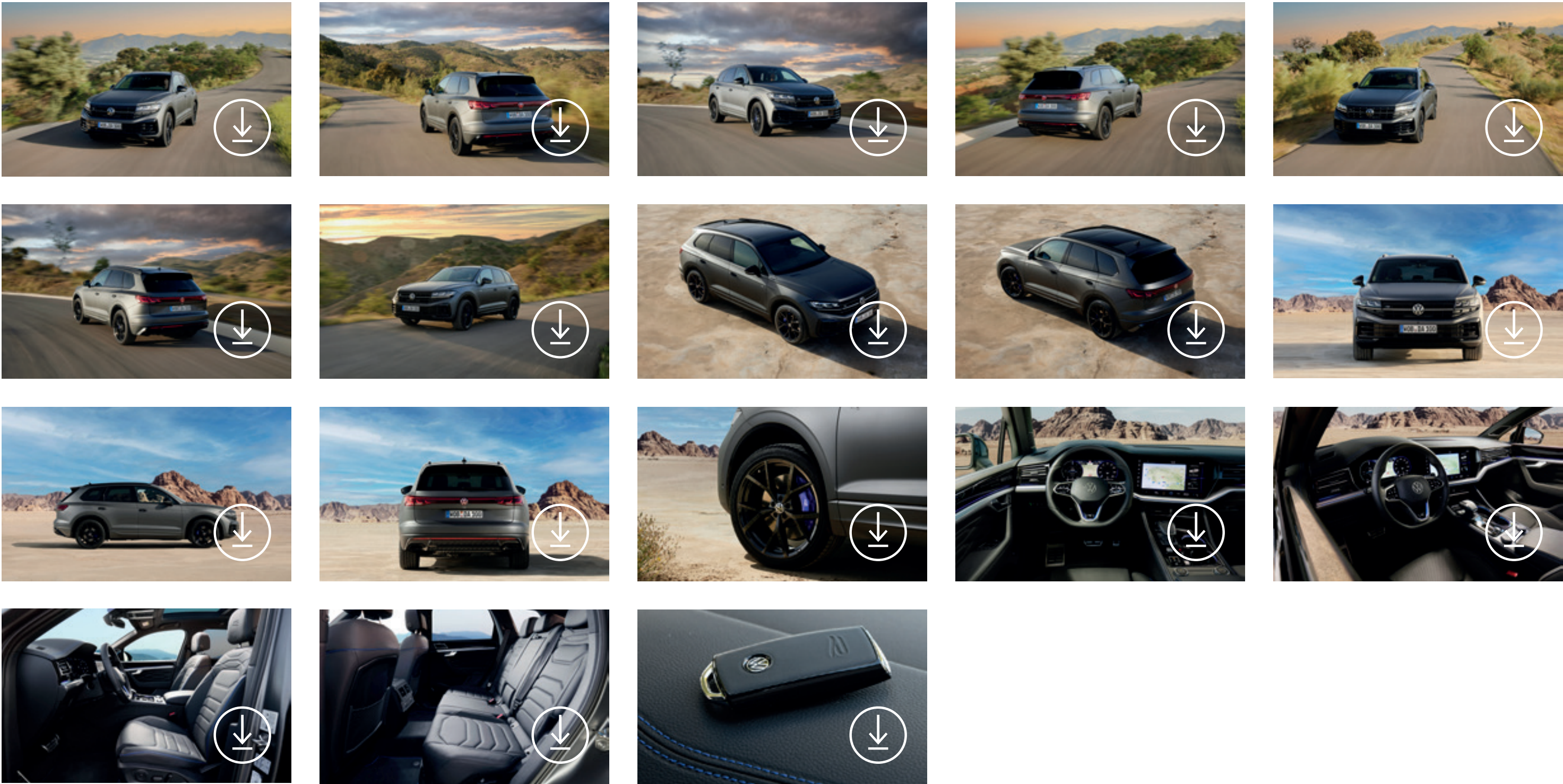
The Touareg R eHybrid in "Lapiz Blue"



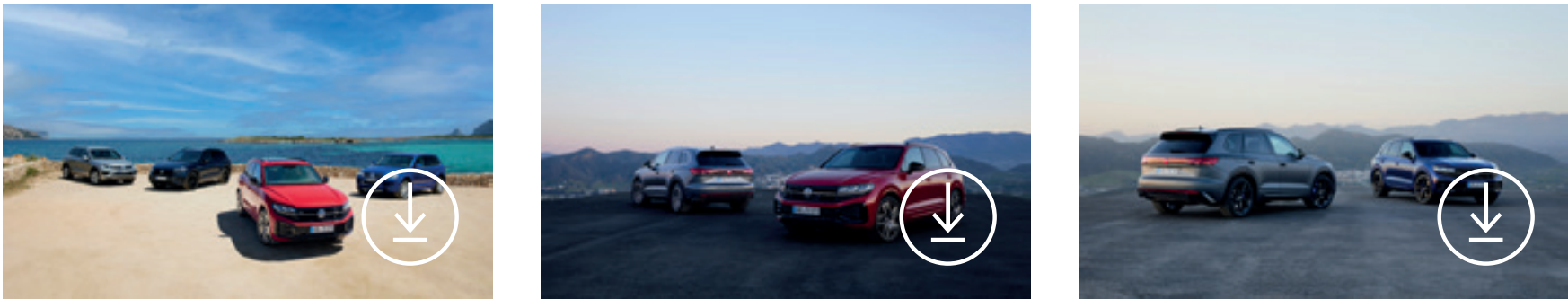


Rights of use
The text, image, audio and video documents provided on **www.volkswagen-newsroom.com** are for information purposes only and may be used for editorial presentations on the social web – or in the case of journalists, influencers and employees of media companies, as a source for their own editorial reporting.
Text, image, audio and video documents may not be used for commercial purposes or passed on to third parties. For all other content, the relevant terms of use apply to the use of **www.volkswagen-newsroom.com**.

The Touareg R eHybrid in "Silicon Gray Matt"

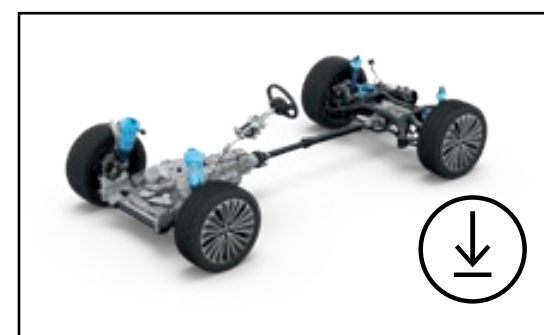


The Touareg Family

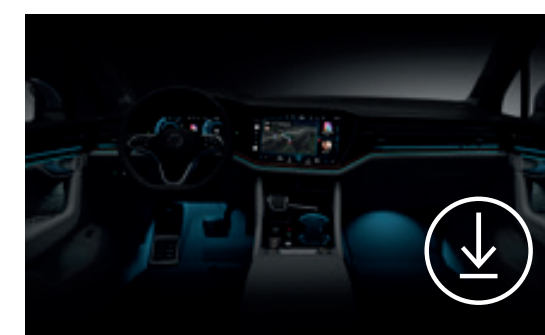


THE MEDIA LIBRARY

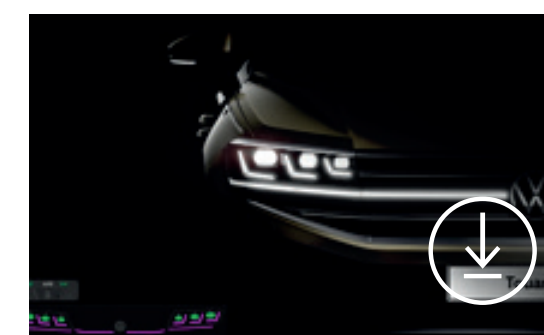
The Running gear



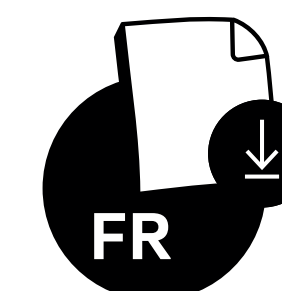
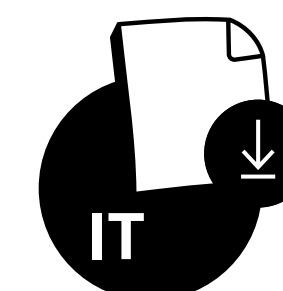
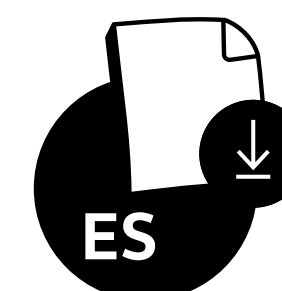
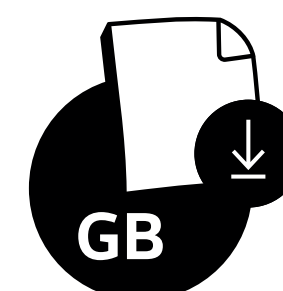
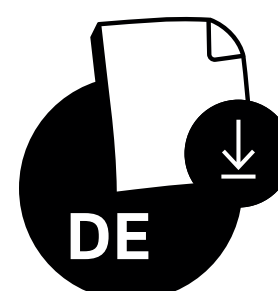
The Ambient light



The Assistance systems



Plain text versions



Rights of use

The text, image, audio and video documents provided on **www.volkswagen-newsroom.com** are for information purposes only and may be used for editorial presentations on the social web – or in the case of journalists, influencers and employees of media companies, as a source for their own editorial reporting.

Text, image, audio and video documents may not be used for commercial purposes or passed on to third parties. For all other content, the relevant terms of use apply to the use of **www.volkswagen-newsroom.com**.



The ranges specified are projected values based on the Worldwide Harmonized Light Vehicles Test Procedure (WLTP). The actual WLTP range values may differ depending on the equipment. The actual range achieved under real conditions varies depending on the driving style, speed, use of comfort features or auxiliary equipment, outside temperature, number of passengers/load, and topography.

The specified consumption and emission values were obtained according to the legally required measurement procedures. On 1 January 2022, the WLTP test cycle completely replaced the NEDC test cycle and therefore no NEDC values are available for new type approved vehicles after that date.

The specifications do not refer to an individual vehicle and are not part of the offer, but serve only to permit comparison between the individual vehicle types. Additional equipment and accessories (additional components, tyre formats, etc.) can alter relevant vehicle parameters such as weight, rolling resistance and aerodynamics, affecting the vehicle's fuel consumption, power consumption, CO₂ emissions and driving performance values in addition to weather and traffic conditions and individual driving behaviour.

Due to more realistic testing conditions, fuel consumption and CO₂ emissions measured according to WLTP will in many cases be higher than the values measured according to NEDC. As a result, the taxation of vehicles may change accordingly as of 1 September 2018. For further information on the differences between WLTP and NEDC, please visit **<http://www.volkswagen.de/wltp>**.

Further information on official fuel consumption data and official specific CO₂ emissions for new passenger cars can be found in the "Guide to fuel economy, CO₂ emissions and power consumption for new passenger car models", which is available free of charge from all sales dealerships and from DAT Deutsche Automobil Treuhand GmbH, Hellmuth-Hirth-Str. 1, D-73760 Ostfildern, Germany, and at **www.dat.de/co2**.



Volkswagen Aktiengesellschaft
Berliner Ring 2
D-38440 Wolfsburg

Responsible for the contents:
Volkswagen Product Communications

Picture credit:
Volkswagen Aktiengesellschaft

Date: 24 May 2023

© 2023 Volkswagen Aktiengesellschaft